

EVEREST 8000 POWER DISTRIBUTOR

The Everest 8000 merges patented science from Shunyata Research's critically acclaimed Hydra Triton and Typhon designs with the transformative technologies applied within its heralded medical division products. From the stunning *form-follows-function* tower design to its inside-out engineering, the Everest represents the pinnacle of development and achievement in multiple industries. Discover for yourself why designer Caelin Gabriel refers to the Everest as the greatest engineering accomplishment of a career spent designing silent electrical systems for military, medical, mastering, recording, and high-performance entertainment systems.



SHUNYATA RESEARCH
shunyata.com



25 YEARS OF EXPERIENCE & SCIENTIFIC INNOVATION DESIGN PROGRESSION

Over the past 25 years Shunyata Research has earned a reputation for producing the highest-performance power-distribution systems on the market. Whether providing clean power for James Guthrie's re-master of *Dark Side Of The Moon*, or unearthing never-before-seen signal resolution in heart surgery systems, Shunyata Research's results have been consistently transformational. With unequivocal critical and professional acclaim as a back drop, Shunyata Designer Caelin Gabriel set about the herculean task of combining his 25 years of experience and scientific innovation into one towering product that incorporates all he's learned about power-system design. That once in a generation product is the Everest 8000.

FEATURES & TECHNOLOGY

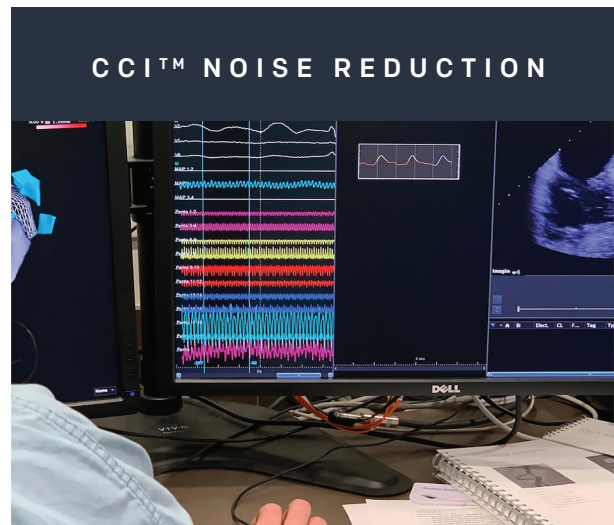
The Everest 8000 features patented technologies and proprietary components that are unavailable in any other competitive product. The Everest supplies unrestricted peak current to multiple components while dramatically reducing noise from the power line and intercepting noise from component-to-component interactions, isolating each component in the system.



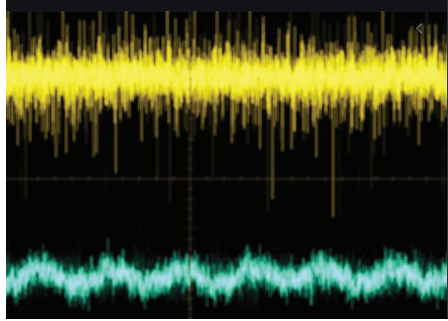
Shunyata Research's patented QR/BB™ technology, originally developed for the Typhon, provides instantaneous on-demand electrical charge to dynamic draw electronics.

The QR/BB™ device in the Everest is three times the size of the Hydra Denali's and provides unprecedented spatial and three-dimensional imaging qualities.

Patent Numbers: US 8,658,892 and US 10,031,536



The Everest 8000 provides unprecedented noise reduction derived from Shunyata Research's CIS® medical division. Over 60 dB of noise reduction and six zones of isolation contribute to remarkable improvements in imaging and radical improvements in audio performance when used in professional recording or home audio entertainment systems.



C MODE NOISE FILTER

The Everest's new CMode noise filter is a functional breakthrough, removing common-mode noise without introducing undesirable compression of dynamic range.



CHASSIS GROUND SYSTEM (CGS)

The Chassis Ground System (CGS), originally deployed in the Triton v3, now achieves new levels of ground-plane noise reduction in the Everest. Four CGS terminals support the connection of up to 12 audio components.



CABLE CRADLE SYSTEM

The Everest utilizes a tower design and cable cradle system inspired by the ground-breaking and award-winning Denali 6000/T.



APPLICATIONS

The Everest 8000 is Shunyata Research's state-of-the-art eight-outlet power distributor. With six independent zones of noise isolation, Everest 8000 can be used in a system composed of digital, analog, and high-current electronics. All outlets deliver both exceptional high-current performance and standard-setting noise isolation that virtually eliminates component-to-component interference. There are no current delivery restrictions of any kind within the Everest. Instead, DTCD[®] (dynamic transient current delivery) is markedly improved across all outlets. From the industry's most demanding amps to the most nuanced noise-sensitive source components, the Everest 8000 delivers previously unattainable performance.

SPECIFICATIONS

Maximum Voltage

90-125 VAC r.m.s. unregulated (US)
220-240 VAC r.m.s. unregulated (EU, AS, AU)

Input Current Ratings

Maximum Continuous Current: 30A (US, AS)
Maximum Continuous Current: 16A (EU, AU)

Output Current Ratings

Max Current/Outlet: 15A (US, AS)
Max Current/Socket: 16A (EU, AU)

Transient Suppression

Maximum Transient Protection: 40,000 A @ 8/50 μ s

Over-Current Protection

Hydraulic Electromagnetic Breaker

Wiring System

8 gauge ArNi[®] VTX[™] Buss system
10 gauge ArNi[®] VTX[™] wiring

Ratings: 600 V 105° C

Noise Suppression

Input to Output (100 kHz - 30 MHz): > 50 dB reduction
Zone to Zone (100 kHz - 30 MHz): > 60 dB reduction

Outlets & Connectors

Zones of Isolation: 6 Zones
Inlet: IEC C19R

US Outlets: 8 NEMA5-20R
AS Outlets: 8 NEMA 5-20R
EU Sockets: 8 CEE 7/3
AU Sockets: 8 AS/NZS 31123

Vibration Control

Vibration dampening panels (internal)
AC outlet dampening gaskets
Shunyata Isolation SSF-50 Footer

Construction

Aluminum and steel chassis
Anodized, brushed aluminum faceplate

GPNR

Length: 127 mm
Diameter: 38 mm

Dimensions

Width: 8.0 inches at base (20.32 cm)
Depth: 14.75 inches with cable cradle (37.47 cm)
Height: 20.75 inches (52.71 cm)
Weight: 34 lbs (16 kg)

NO HUM — NO BUZZ — NO HEAT



SHUNYATA RESEARCH

shunyata.com